

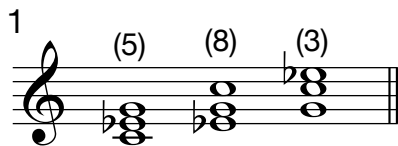
Name _____

Klasse _____

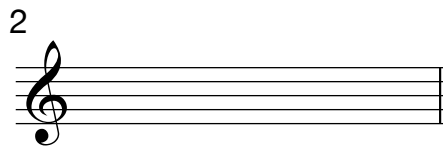
Dreiklänge: Sopranlage

Je nach Dreiklangston im **Sopran** spricht man von **Terz-, Quint- oder Oktavlage**.

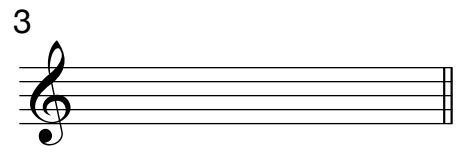
Schreiben Sie Quint-, Oktav- und Terzlage für die angegebenen Dreiklänge.
Spielen Sie die Dreiklänge auf einer (Klavier-) Tastatur.



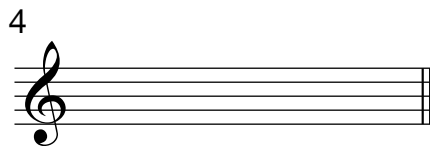
C-Moll



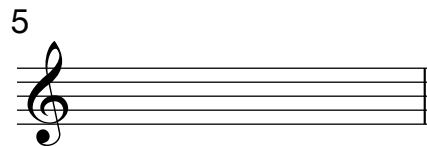
Es-Dur



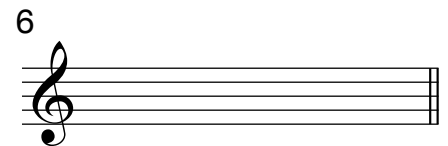
A vermindert



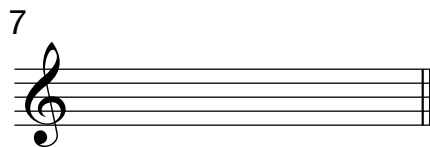
E-Moll



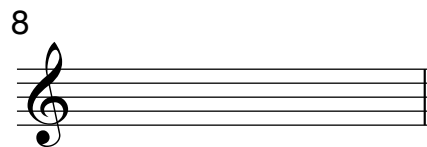
B übermässig



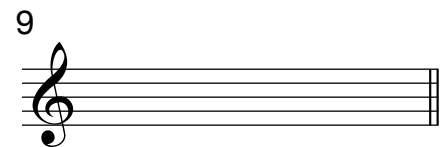
F-Dur



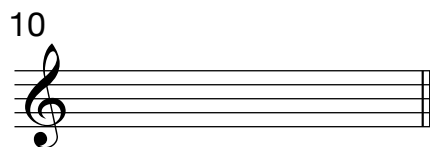
A-Moll



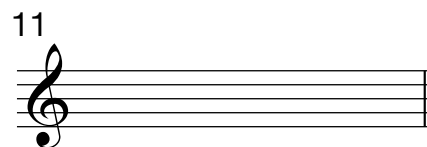
H-Dur



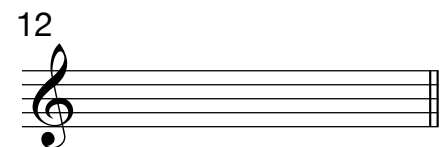
C übermässig



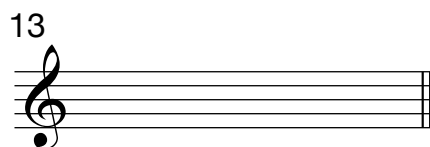
D vermindert



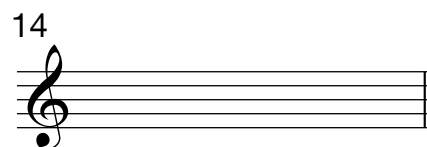
G-Moll



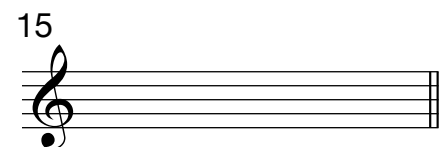
Des-Dur



Cis-Moll



Fis vermindert



As-Moll